

State of Rhode Island and Providence Plantations

Budget



Fiscal Year 2013

Volume IV – Public Safety, Natural Resources
and Transportation

Lincoln D. Chafee, Governor

Budget

Public Safety Function Expenditures

	FY 2010 Audited	FY 2011 Audited	FY 2012 Enacted	FY 2012 Revised	FY 2013 Recommend
Expenditures By Object					
Personnel	310,460,133	332,721,945	360,847,788	374,707,005	371,246,279
Operating Supplies and Expenses	39,657,229	39,543,546	41,881,331	43,070,811	43,745,566
Assistance and Grants	41,722,370	51,250,611	51,633,043	62,822,354	54,017,571
Subtotal: Operating Expenditures	391,839,732	423,516,102	454,362,162	480,600,170	469,009,416
Capital Purchases and Equipment	29,700,496	15,951,899	20,119,974	24,690,691	27,739,742
Operating Transfers	328,082	-	-	-	-
Total Expenditures	\$421,868,310	\$439,468,001	\$474,482,136	\$505,290,861	\$496,749,158
Expenditures By Funds					
General Revenue	335,623,546	365,120,231	394,837,434	406,398,936	404,895,066
Federal Funds	45,662,913	49,146,502	47,029,864	61,546,293	49,055,309
Restricted Receipts	10,932,268	10,682,495	12,300,029	12,847,145	13,817,636
Operating Transfers from Other Funds	29,463,169	14,310,612	20,082,446	24,266,352	28,734,184
Other Funds	186,414	208,161	232,363	232,135	246,963
Total Expenditures	\$421,868,310	\$439,468,001	\$474,482,136	\$505,290,861	\$496,749,158
FTE Authorization	2,951.8	3,006.6	3,189.2	3,185.6	3,188.6

Agency

Department Of Attorney General

Agency Mission

To represent the State with regard to the investigation, prosecution, and trial of all felony matters, misdemeanor cases, and appellate matters within its jurisdiction.

To provide public protection on behalf of the people of Rhode Island as citizens, consumers, and taxpayers.

To provide criminal history information and descriptive data on demand to federal and local law enforcement agencies seven days a week, 24-hours a day.

Agency Description

The Attorney General is established under the Rhode Island Constitution as one of the five general officers subject to election by the voters. As the State's central legal agency, the Attorney General is responsible for the prosecution of all felony criminal cases, misdemeanor appeals, and misdemeanor cases brought by state law enforcement action in the various district courts.

The Attorney General initiates legal action to protect the interests of the citizens of Rhode Island regarding compliance with the Open Meetings Act and the Access to Public Records Act, and protection of the public from deceptive business practices and anti-trust violations. Additionally, the Attorney General provides legal advice to state officers and represents all agencies, departments, and commissions in litigation. The State Bureau of Criminal Identification, the central repository for all criminal records in the State, is operated and maintained by the Attorney General.

The Office of Attorney General is divided into four programs: Criminal, Civil, Bureau of Criminal Identification, and General.

Statutory History

Article IV, Section 1 of the Rhode Island Constitution and R.I.G.L. 42-9 establish the Office of the Attorney General. R.I.G.L. 12-9 relates to extradition; R.I.G.L. 9-31 relates to governmental tort liability; R.I.G.L. 12-12 relates to indictments and information; R.I.G.L. 12-1 relates to criminal identification; and R.I.G.L. 11-57 relates to weapons.

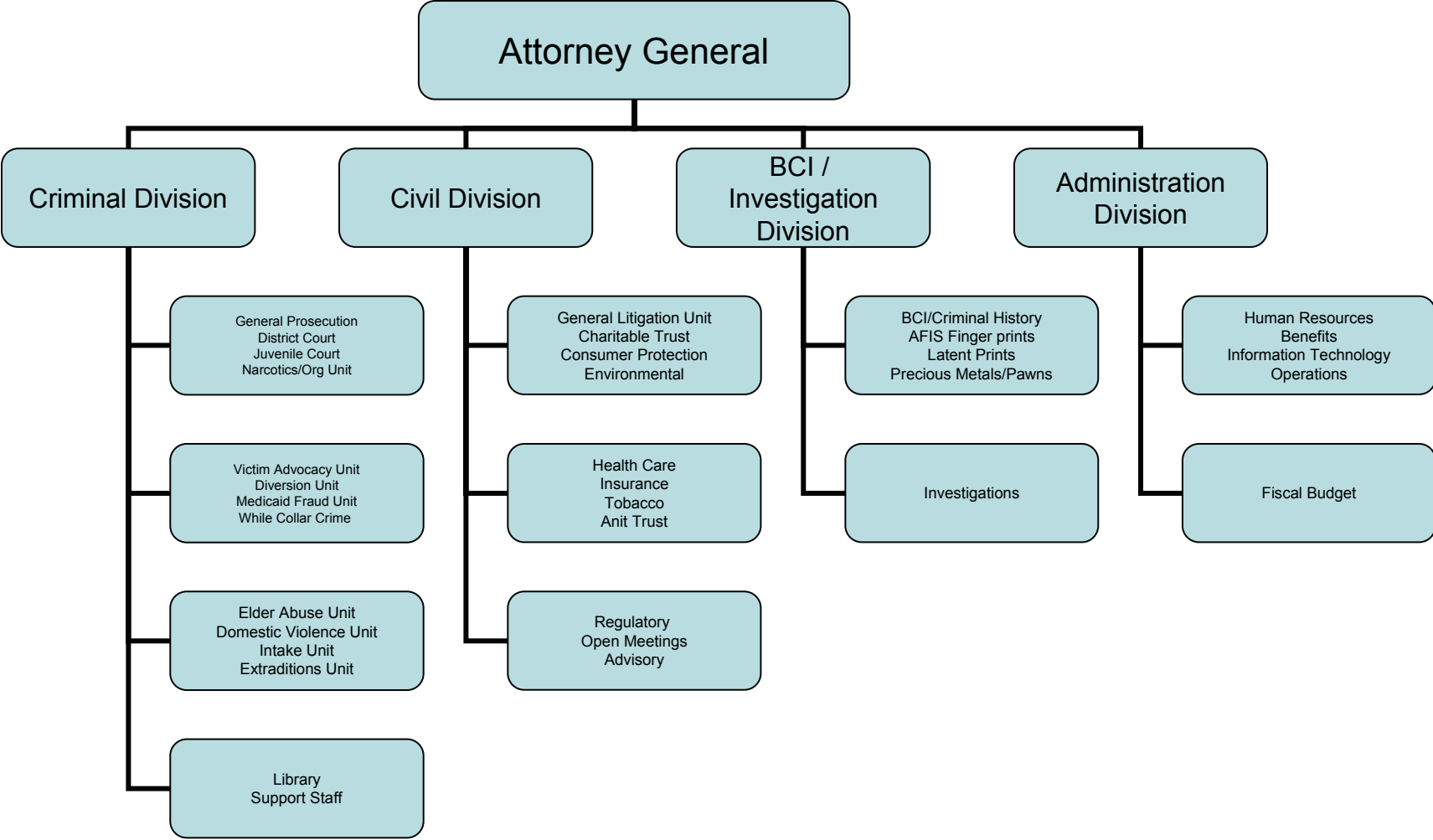
Budget

Department Of Attorney General

	FY 2010 Audited	FY 2011 Audited	FY 2012 Enacted	FY 2012 Revised	FY 2013 Recommend
Expenditures By Program					
Criminal	13,910,370	14,784,607	17,009,156	17,100,689	16,330,254
Civil	4,402,581	4,808,702	5,416,183	6,191,898	5,734,060
Bureau of Criminal Identification	1,055,635	1,147,431	1,126,572	1,244,234	1,234,405
General	2,941,992	2,877,889	3,159,135	3,010,130	3,096,063
Total Expenditures	\$22,310,578	\$23,618,629	\$26,711,046	\$27,546,951	\$26,394,782
Expenditures By Object					
Personnel	20,399,199	21,615,113	23,776,762	24,410,471	23,805,960
Operating Supplies and Expenses	1,400,868	1,574,460	2,062,426	2,259,045	2,171,194
Subtotal: Operating Expenditures	21,800,067	23,189,573	25,839,188	26,669,516	25,977,154
Capital Purchases and Equipment	510,511	429,056	871,858	877,435	417,628
Total Expenditures	\$22,310,578	\$23,618,629	\$26,711,046	\$27,546,951	\$26,394,782
Expenditures By Funds					
General Revenue	19,592,235	20,763,514	22,442,867	23,054,817	23,276,324
Federal Funds	1,297,016	1,788,468	2,895,944	2,887,910	1,600,853
Restricted Receipts	1,051,750	791,992	1,122,235	1,354,224	1,230,105
Operating Transfers from Other Funds	369,577	274,655	250,000	250,000	287,500
Total Expenditures	\$22,310,578	\$23,618,629	\$26,711,046	\$27,546,951	\$26,394,782
FTE Authorization	230.0	231.1	231.1	233.1	233.1
Agency Measures					
Minorities as a Percentage of the Workforce	15.2%	17.0%	14.0%	14.0%	15.0%
Females as a Percentage of the Workforce	59.7%	59.0%	60.0%	60.0%	60.0%
Persons with Disabilities as a Percentage of the Workforce	3.0%	3.0%	2.0%	2.0%	2.0%

The Agency

Attorney General



Personnel

Department Of Attorney General Agency Summary

	FY 2012		FY 2013	
	FTE	Cost	FTE	Cost
Distribution by Category				
Unclassified	233.1	14,728,591	233.1	14,884,680
Turnover	-	(199,897)	-	(223,270)
Total Salaries	233.1	\$14,528,694	233.1	\$14,661,410
Benefits				
Defined Contribution Plan	-	-	-	146,615
FICA	-	1,092,345	-	1,104,569
Medical	-	2,400,257	-	2,687,759
Payroll Accrual	-	-	-	86,643
Retiree Health	-	998,576	-	1,007,896
Retirement	-	3,349,932	-	3,105,131
Total Salaries and Benefits	233.1	\$22,369,804	233.1	\$22,800,023
Cost Per FTE Position		\$95,967		\$97,812
Statewide Benefit Assessment	-	544,826	-	549,803
Payroll Costs	233.1	\$22,914,630	233.1	\$23,349,826
Purchased Services				
Building and Grounds Maintenance	-	890	-	890
Clerical and Temporary Services	-	29,706	-	30,030
Design and Engineering Services	-	107,543	-	82,543
Information Technology	-	635,327	-	30,627
Legal Services	-	678,107	-	267,776
Management and Consultant Services	-	37,703	-	37,703
Medical Services	-	4,000	-	4,000
Other Contract Services	-	2,565	-	2,565
Total Personnel	233.1	\$24,410,471	233.1	\$23,805,960
Distribution by Source of Funds				
General Revenue	210.1	21,532,800	210.1	21,616,643
Federal Funds	12.0	1,881,753	12.0	1,385,678
Restricted Receipts	11.0	995,918	11.0	803,639

Personnel

Department Of Attorney General Agency Summary

	FY 2012		FY 2013	
	FTE	Cost	FTE	Cost
Total All Funds	233.1	\$24,410,471	233.1	\$23,805,960

The Program

Department Of Attorney General Criminal

Program Mission

To represent the State with regard to the investigation, prosecution, and trial of all felony matters, misdemeanor cases brought by state law enforcement, and appellate matters within its jurisdiction.

Program Description

The Criminal Program, with offices in Providence, Kent, Washington, and Newport counties, is responsible for the prosecution of felony cases and misdemeanor appeals from the district courts. The Narcotics and Organized Crime Prosecution Unit is composed of legal and support staff. This unit prosecutes all narcotics and organized crime cases. The Forfeiture Unit handles all asset forfeiture cases. The Information-Charging Unit prepares information for all felony cases filed in Providence County, with the exception of Grand Jury indictments. The Victim/Witness Unit administers a comprehensive assistance program for victims and state witnesses; this unit's existence is mandated by the Victim's Bill of Rights. The Diversion Unit provides alternatives to court prosecution for selected first-time, non-violent felony offenders. The Juvenile Unit is responsible for prosecuting all juveniles charged with felonies by local police and state agencies, and all adults charged with criminal child abuse. The Appellate Unit represents the State in all criminal appeals before the Rhode Island Supreme Court and post-conviction cases filed in federal court. The Medicaid Fraud Control Unit prosecutes fraud and abuse by providers of Medicaid services to Rhode Island and the Welfare Fraud Unit investigates and prosecutes all cases of welfare fraud.

Statutory History

Article IV, Section 1 of the Rhode Island Constitution and R.I.G.L. 42-9 establish the Office of the Attorney General. R.I.G.L. 12-9 relates to extradition; R.I.G.L. 9-31 relates to governmental tort liability; R.I.G.L. 12-12 relates to indictments and information; R.I.G.L. 12-1 relates to criminal identification; and R.I.G.L. 11-57 relates to weapons.

The Budget

Department Of Attorney General Criminal

	2010 Audited	2011 Audited	2012 Enacted	2012 Revised	2013 Recommend
Expenditures By Subprogram					
Operations	13,910,370	14,784,607	17,009,156	17,100,689	16,330,254
Total Expenditures	\$13,910,370	\$14,784,607	\$17,009,156	\$17,100,689	\$16,330,254
Expenditures By Object					
Personnel	12,928,407	13,703,480	15,041,624	15,048,481	14,912,282
Operating Supplies and Expenses	882,320	955,066	1,394,250	1,483,420	1,346,491
Subtotal: Operating Expenditures	13,810,727	14,658,546	16,435,874	16,531,901	16,258,773
Capital Purchases and Equipment	99,643	126,061	573,282	568,788	71,481
Total Expenditures	\$13,910,370	\$14,784,607	\$17,009,156	\$17,100,689	\$16,330,254
Expenditures By Funds					
General Revenue	12,389,919	12,785,939	13,739,364	13,900,426	14,369,909
Federal Funds	1,235,503	1,724,065	2,870,904	2,821,680	1,575,823
Restricted Receipts	284,948	274,603	398,888	378,583	384,522
Total Expenditures	\$13,910,370	\$14,784,607	\$17,009,156	\$17,100,689	\$16,330,254

Personnel

Department Of Attorney General Criminal

	Grade	FY 2012		FY 2013	
		FTE	Cost	FTE	Cost
Unclassified					
Assistant Attorney General	8745	1.0	142,736	1.0	142,736
Exec. Asst. for Policy & Prog Rev	8743	1.0	138,166	1.0	138,166
Assistant Attorney General	8740	4.0	475,230	4.0	475,230
Assistant Attorney General	8743	1.0	111,818	1.0	111,818
Assistant Attorney General	8738	5.0	526,997	5.0	530,607
Staff Attorney IV	8735	1.0	90,644	1.0	90,644
Staff Attorney V	8736	6.0	543,223	6.0	552,178
Staff Attorney III	8734	7.0	599,089	7.0	609,119
Staff Attorney II	8732	6.0	467,777	6.0	474,927
Director of Investigations (Medicaid)	8736	1.0	77,901	1.0	80,750
Senior Investigator (AG)	8728	1.0	72,822	1.0	72,822
Staff Attorney I	8730	7.9	562,264	7.9	567,526
Senior Legal Assistant	8726	6.0	392,454	6.0	394,420
Principal Auditor	8728	30.0	1,898,993	30.0	1,920,296
Special Prosecutor Investigator	8724	4.0	241,476	4.0	242,899
Sr. Economic Crime Investigator	8724	2.0	118,750	2.0	118,750
Investigator	8724	3.0	167,329	3.0	167,329
Assistant Clerk/Research	8720	5.0	266,684	5.0	266,684
Paralegal Clerk	8718	0.6	31,207	0.6	31,207
Consumer Investigator	8718	1.0	51,731	1.0	51,731
Administrative Assistant	8722	3.0	151,110	3.0	154,325
Senior Administrator Clerk	8717	16.0	734,841	16.0	737,820
Con. Sec. to Attorney General	8716	3.0	135,988	3.0	135,988
Senior Legal Secretary	8713	1.0	45,117	1.0	45,117
Administrative Aide	8716	1.0	44,653	1.0	44,653
Prin. Diversion Screener	8722	1.0	44,035	1.0	46,174
Case Intake Coordinator	8717	1.0	43,873	1.0	43,873
Classification Clerk (AG)	8714	2.0	87,081	2.0	87,081
Legal Assistant (AG)	8720	1.0	41,370	1.0	42,558
Technical Assistant	8715	1.0	41,271	1.0	41,271
Investigator/Clerk	8714	4.0	160,541	4.0	161,611
Consumer Specialist	8714	6.0	236,833	6.0	237,464
Family Crisis Aide	8715	2.0	78,311	2.0	79,014
Legal Secretary	8712	8.0	302,483	8.0	303,900
Principal Clerk Stenographer	8711	5.0	173,820	5.0	176,055
Data Entry Operator	8712	2.0	68,558	2.0	69,846
Subtotal		150.5	\$9,367,176	150.5	\$9,446,589
Turnover		-	(126,810)	-	(141,699)
Subtotal		-	(\$126,810)	-	(\$141,699)
Total Salaries		150.5	\$9,240,366	150.5	\$9,304,890

Personnel

Department Of Attorney General Criminal

	Grade	FY 2012		FY 2013	
		FTE	Cost	FTE	Cost
Benefits					
Defined Contribution Plan		-	-	-	93,049
FICA		-	697,808	-	704,449
Medical		-	1,558,712	-	1,748,947
Payroll Accrual		-	-	-	54,988
Retiree Health		-	633,889	-	638,316
Retirement		-	2,134,675	-	1,970,677
Subtotal		-	\$5,025,084	-	\$5,210,426
Total Salaries and Benefits		150.5	\$14,265,450	150.5	\$14,515,316
Cost Per FTE Position			\$94,787		\$96,447
Statewide Benefit Assessment		-	346,515	-	348,933
Subtotal		-	\$346,515	-	\$348,933
Payroll Costs		150.5	\$14,611,965	150.5	\$14,864,249
Purchased Services					
Building and Grounds Maintenance		-	530	-	530
Clerical and Temporary Services		-	14,218	-	14,235
Design and Engineering Services		-	-	-	-
Information Technology		-	413,500	-	25,000
Legal Services		-	2,500	-	2,500
Medical Services		-	4,000	-	4,000
Other Contract Services		-	1,768	-	1,768
Subtotal		-	\$436,516	-	\$48,033
Total Personnel		150.5	\$15,048,481	150.5	\$14,912,282
Distribution By Source Of Funds					
General Revenue		136.5	13,030,816	136.5	13,363,339
Federal Funds		11.0	1,815,553	11.0	1,360,678
Restricted Receipts		3.0	202,112	3.0	188,265
Total All Funds		150.5	\$15,048,481	150.5	\$14,912,282

The Program

Department Of Attorney General Civil

Program Mission

To provide cost effective legal representation to the State, its agencies, boards and commissions.

To provide public protection on behalf of the people of Rhode Island as citizens, consumers and taxpayers.

Program Description

The Criminal Program, with offices in Providence, Kent, Washington, and Newport counties, is responsible for the prosecution of felony cases and misdemeanor appeals from the district courts. The Narcotics and Organized Crime Prosecution Unit is composed of legal and support staff. This unit prosecutes all narcotics and organized crime cases. The Forfeiture Unit handles all asset forfeiture cases. The Information-Charging Unit prepares information for all felony cases filed in Providence County, with the exception of Grand Jury indictments. The Victim/Witness Unit administers a comprehensive assistance program for victims and state witnesses; this unit's existence is mandated by the Victim's Bill of Rights. The Diversion Unit provides alternatives to court prosecution for selected first-time, non-violent felony offenders. The Juvenile Unit is responsible for prosecuting all juveniles charged with felonies by local police and state agencies, and all adults charged with criminal child abuse. The Appellate Unit represents the State in all criminal appeals before the Rhode Island Supreme Court and post-conviction cases filed in federal court. The Medicaid Fraud Control Unit prosecutes fraud and abuse by providers of Medicaid services to Rhode Island and the Welfare Fraud Unit investigates and prosecutes all cases of welfare fraud.

Statutory History

Article IV, Section 1 of the Rhode Island Constitution and R.I.G.L. 41-9 establish the office of the Attorney General. R.I.G.L. 12-9 relates to extraditions; R.I.G.L. 9-31 relates to governmental tort liability; R.I.G.L. 12-12 relates to indictments and information; R.I.G.L. 12-1 relates to criminal identification; and R.I.G.L. 11-47 relates to weapons.

The Budget

Department Of Attorney General Civil

	2010 Audited	2011 Audited	2012 Enacted	2012 Revised	2013 Recommend
Expenditures By Subprogram					
Operations	4,402,581	4,808,702	5,416,183	6,191,898	5,734,060
Total Expenditures	\$4,402,581	\$4,808,702	\$5,416,183	\$6,191,898	\$5,734,060
Expenditures By Object					
Personnel	4,024,775	4,479,196	4,950,149	5,679,764	5,172,848
Operating Supplies and Expenses	342,812	311,183	423,541	459,570	508,648
Subtotal: Operating Expenditures	4,367,587	4,790,379	5,373,690	6,139,334	5,681,496
Capital Purchases and Equipment	34,994	18,323	42,493	52,564	52,564
Total Expenditures	\$4,402,581	\$4,808,702	\$5,416,183	\$6,191,898	\$5,734,060
Expenditures By Funds					
General Revenue	3,635,779	4,291,313	4,692,836	5,216,257	4,888,477
Restricted Receipts	766,802	517,389	723,347	975,641	845,583
Total Expenditures	\$4,402,581	\$4,808,702	\$5,416,183	\$6,191,898	\$5,734,060

Personnel

Department Of Attorney General Civil

	Grade	FY 2012		FY 2013	
		FTE	Cost	FTE	Cost
Unclassified					
Assistant Attorney General	8745	1.0	142,736	1.0	142,736
Assistant Attorney General	8740	2.0	231,260	2.0	231,260
Assistant Attorney General	8738	6.0	655,270	6.0	657,930
Staff Attorney V	8736	2.0	162,081	2.0	168,009
Staff Attorney III	8732	5.0	401,700	5.0	407,182
Staff Attorney II	8730	3.0	215,646	3.0	215,646
Staff Attorney I	8728	7.0	420,073	7.0	435,043
Office Manager	8720	1.0	52,725	1.0	52,725
Associate Executive Assistant	8724	2.0	105,257	2.0	106,823
Sr. Legal Assistant	8720	1.0	50,855	1.0	50,855
Administrative Aide	8715	4.0	163,348	4.0	165,213
Paralegal Clerk	8717	5.0	203,183	5.0	205,509
Senior Legal Secretary	8713	2.0	78,518	2.0	78,518
Consumer Specialist	8714	1.0	36,509	1.0	37,210
Legal Secretary	8712	2.0	72,678	2.0	73,501
Subtotal		44.0	\$2,991,839	44.0	\$3,028,160
Turnover		-	(41,292)	-	(45,422)
Subtotal		-	(\$41,292)	-	(\$45,422)
Total Salaries		44.0	\$2,950,547	44.0	\$2,982,738
Benefits					
Defined Contribution Plan		-	-	-	29,828
FICA		-	221,034	-	224,286
Medical		-	530,211	-	593,328
Payroll Accrual		-	-	-	17,627
Retiree Health		-	202,408	-	204,617
Retirement		-	678,036	-	631,712
Subtotal		-	\$1,631,689	-	\$1,701,398
Total Salaries and Benefits		44.0	\$4,582,236	44.0	\$4,684,136
Cost Per FTE Position			\$104,142		\$106,458
Statewide Benefit Assessment		-	110,645	-	111,853
Subtotal		-	\$110,645	-	\$111,853
Payroll Costs		44.0	\$4,692,881	44.0	\$4,795,989

Personnel

Department Of Attorney General Civil

	Grade	FY 2012		FY 2013	
		FTE	Cost	FTE	Cost
Purchased Services					
Building and Grounds Maintenance		-	225	-	225
Clerical and Temporary Services		-	15,488	-	15,795
Design and Engineering Services		-	57,488	-	57,488
Information Technology		-	200,000	-	-
Legal Services		-	675,607	-	265,276
Management and Consultant Services		-	37,703	-	37,703
Other Contract Services		-	372	-	372
Subtotal		-	\$986,883	-	\$376,859
Total Personnel		44.0	\$5,679,764	44.0	\$5,172,848
Distribution By Source Of Funds					
General Revenue		36.0	4,885,958	36.0	4,557,474
Restricted Receipts		8.0	793,806	8.0	615,374
Total All Funds		44.0	\$5,679,764	44.0	\$5,172,848

The Program

Department Of Attorney General
Bureau of Criminal Identification

Program Mission

To provide criminal history information and descriptive data on demand to federal and local law enforcement agencies, 24-hours a day, seven days a week.

Program Description

The Bureau of Criminal Identification (BCI) is a repository and central clearinghouse for information on individuals who have been arrested or convicted of crimes in Rhode Island. This information includes criminal history records, fingerprints, and warrant information. The unit operates 24-hours a day, seven days a week. This unit receives and processes requests for records from law enforcement agencies across the country. Additionally, BCI issues and maintains pistol permits, issues security guard licenses, and conducts background checks.

Statutory History

Section 12-1-4 of the Rhode Island General Laws establishes the Bureau of Criminal Identification within the Office of the Attorney General. The duties of this unit are further outlined in Sections 12-1-5 through 12-1-12.

The Budget

Department Of Attorney General Bureau of Criminal Identification

	2010 Audited	2011 Audited	2012 Enacted	2012 Revised	2013 Recommend
Expenditures By Subprogram					
Operations	1,055,635	1,147,431	1,126,572	1,244,234	1,234,405
Total Expenditures	\$1,055,635	\$1,147,431	\$1,126,572	\$1,244,234	\$1,234,405
Expenditures By Object					
Personnel	1,002,598	1,090,078	1,062,936	1,181,284	1,171,455
Operating Supplies and Expenses	46,740	54,637	59,775	59,089	59,089
Subtotal: Operating Expenditures	1,049,338	1,144,715	1,122,711	1,240,373	1,230,544
Capital Purchases and Equipment	6,297	2,716	3,861	3,861	3,861
Total Expenditures	\$1,055,635	\$1,147,431	\$1,126,572	\$1,244,234	\$1,234,405
Expenditures By Funds					
General Revenue	994,122	1,083,028	1,101,532	1,178,004	1,209,375
Federal Funds	61,513	64,403	25,040	66,230	25,030
Total Expenditures	\$1,055,635	\$1,147,431	\$1,126,572	\$1,244,234	\$1,234,405

Personnel

Department Of Attorney General Bureau of Criminal Identification

	Grade	FY 2012		FY 2013	
		FTE	Cost	FTE	Cost
Unclassified					
Chief of the Office of Investigations	8736	1.0	89,500	1.0	89,500
Administrative Assistant	8722	1.0	59,961	1.0	59,961
AFIS Operator/Fingerprint Expert	8724	1.0	59,375	1.0	59,375
Legal Assistant	8720	2.0	98,765	2.0	100,673
Sr. Administrative Aide	8717	1.0	43,873	1.0	43,873
Fingerprint Expert	8720	1.0	42,006	1.0	43,109
Legal Secretary	8712	2.0	74,382	2.0	74,844
Classification Clerk (AG)	8714	3.0	110,713	3.0	121,911
Principal Clerk Stenographer	8711	3.0	105,463	3.0	107,329
Data Entry Operator	8712	1.0	34,611	1.0	35,244
Subtotal		16.0	\$718,649	16.0	\$735,819
Turnover		-	(9,229)	-	(11,037)
Subtotal		-	(\$9,229)	-	(\$11,037)
Total Salaries		16.0	\$709,420	16.0	\$724,782
Benefits					
Defined Contribution Plan		-	-	-	7,248
FICA		-	54,271	-	55,446
Medical		-	111,351	-	122,547
Payroll Accrual		-	-	-	4,283
Retiree Health		-	48,666	-	49,720
Retirement		-	163,024	-	153,501
Subtotal		-	\$377,312	-	\$392,745
Total Salaries and Benefits		16.0	\$1,086,732	16.0	\$1,117,527
Cost Per FTE Position			\$67,921		\$69,845
Statewide Benefit Assessment		-	26,603	-	27,179
Subtotal		-	\$26,603	-	\$27,179
Payroll Costs		16.0	\$1,113,335	16.0	\$1,144,706
Purchased Services					
Building and Grounds Maintenance		-	35	-	35
Design and Engineering Services		-	50,000	-	25,000
Information Technology		-	17,789	-	1,589
Other Contract Services		-	125	-	125
Subtotal		-	\$67,949	-	\$26,749
Total Personnel		16.0	\$1,181,284	16.0	\$1,171,455

Personnel

Department Of Attorney General Bureau of Criminal Identification

	Grade	FY 2012		FY 2013	
		FTE	Cost	FTE	Cost
Distribution By Source Of Funds					
General Revenue		15.0	1,115,084	15.0	1,146,455
Federal Funds		1.0	66,200	1.0	25,000
Total All Funds		16.0	\$1,181,284	16.0	\$1,171,455

The Program

Department Of Attorney General General

Program Mission

To provide the infrastructure necessary for the efficient operation of the Office of the Attorney General.

Program Description

The General Program provides administrative support to ensure that the department operates efficiently. This program consists of six units.

The Executive Unit consists of the Attorney General, the Deputy Attorney General and support staff. The function of the Executive Unit is to coordinate the efforts of all parts of the department.

The Fiscal Unit is responsible for all financial operations of the department. This includes the preparation of the departmental budget, monitoring and controlling expenditures, and processing all financial paperwork.

The Personnel Unit processes all paperwork regarding hiring, transfers, promotions, and terminations, and monitors payroll records submitted to Accounts and Control. This unit must ensure that all state and federal laws and regulations are upheld, including equal employment opportunities and affirmative action requirements.

The Operations Unit is responsible for purchasing, maintenance and repair of the department's buildings and automobiles, and monitoring the department's telephone and mail systems.

The Management Information System Unit administers and operates the department's computer systems. The system consists of five central processing units, multiple application servers, over 220 desktop computers, and 30 printers. The Attorney General's computer system is linked to the court's computer system and the Rhode Island Law Enforcement Telecommunications System.

The Public Information/Legislation Unit handles all communication with the media, submits legislation on the Attorney General's behalf, and coordinates the Attorney General's education, and community outreach efforts.

Statutory History

Article IV, Section 1 of the Rhode Island Constitution and R.I.G.L. 42-9 establish the Office of the Attorney General. R.I.G.L. 12-9 relates to extraditions; R.I.G.L. 9-31 relates to governmental tort liability; R.I.G.L. 12-12 relates to indictments and information; R.I.G.L. 12-1 relates to criminal identification; and R.I.G.L. 11-57 relates to weapons.

The Budget

Department Of Attorney General General

	2010 Audited	2011 Audited	2012 Enacted	2012 Revised	2013 Recommend
Expenditures By Subprogram					
Operations	2,941,992	2,877,889	3,159,135	3,010,130	3,096,063
Total Expenditures	\$2,941,992	\$2,877,889	\$3,159,135	\$3,010,130	\$3,096,063
Expenditures By Object					
Personnel	2,443,419	2,342,359	2,722,053	2,500,942	2,549,375
Operating Supplies and Expenses	128,996	253,574	184,860	256,966	256,966
Subtotal: Operating Expenditures	2,572,415	2,595,933	2,906,913	2,757,908	2,806,341
Capital Purchases and Equipment	369,577	281,956	252,222	252,222	289,722
Total Expenditures	\$2,941,992	\$2,877,889	\$3,159,135	\$3,010,130	\$3,096,063
Expenditures By Funds					
General Revenue	2,572,415	2,603,234	2,909,135	2,760,130	2,808,563
Operating Transfers from Other Funds	369,577	274,655	250,000	250,000	287,500
Total Expenditures	\$2,941,992	\$2,877,889	\$3,159,135	\$3,010,130	\$3,096,063

Personnel

Department Of Attorney General General

	Grade	FY 2012		FY 2013	
		FTE	Cost	FTE	Cost
Unclassified					
Assistant Attorney General	8747	1.0	156,407	1.0	156,407
Executive Assistant/Chief of Staff	8745	1.0	124,118	1.0	124,118
Exec. Asst. for Policy & Prog Rev	8747	1.0	117,273	1.0	126,368
Director of Public Affairs	8740	1.0	116,804	1.0	119,442
Attorney General	535	1.0	115,610	1.0	115,610
Public Information Officer	8735	1.0	98,149	1.0	98,149
Director of Telecommunications	8735	1.0	94,764	1.0	94,764
Director of Policy & Public Affairs	8738	1.0	82,164	1.0	85,927
Exec. Asst. Comm. & Public Information	8728	1.0	78,728	1.0	78,728
Director of Investigations	8732	1.0	70,114	1.0	73,966
Senior Legal Assistant	8724	1.0	67,640	1.0	62,074
Staff Attorney I	8726	1.0	61,485	1.0	61,485
Projects Manager	8726	1.0	58,059	1.0	60,130
Executive Administrative Aide	8720	1.0	53,167	1.0	53,167
Senior Investigator	8724	1.0	48,119	1.0	49,685
Systems Analyst	8718	1.0	47,420	1.0	47,420
Administrative Officer	8722	1.0	44,035	1.0	45,449
Investigator	8722	1.0	44,035	1.0	45,449
Principal Clerk Stenographer	8711	1.0	42,841	1.0	42,841
Legal Assistant (AG)	8721	1.0	42,664	1.0	43,913
Administrative Aide	8712	1.0	33,990	1.0	34,656
Legal Assistant (AG)	8712	1.0	33,366	1.0	33,970
Chief, Out-County Clerk	8711	0.6	19,975	0.6	20,394
Subtotal		22.6	\$1,650,927	22.6	\$1,674,112
Turnover		-	(22,566)	-	(25,112)
Subtotal		-	(\$22,566)	-	(\$25,112)
Total Salaries		22.6	\$1,628,361	22.6	\$1,649,000
Benefits					
Defined Contribution Plan		-	-	-	16,490
FICA		-	119,232	-	120,388
Medical		-	199,983	-	222,937
Payroll Accrual		-	-	-	9,745
Retiree Health		-	113,613	-	115,243
Retirement		-	374,197	-	349,241
Subtotal		-	\$807,025	-	\$834,044
Total Salaries and Benefits		22.6	\$2,435,386	22.6	\$2,483,044
Cost Per FTE Position			\$107,760		\$109,869
Statewide Benefit Assessment		-	61,063	-	61,838
Subtotal		-	\$61,063	-	\$61,838

Personnel

Department Of Attorney General General

	Grade	FY 2012		FY 2013	
		FTE	Cost	FTE	Cost
Payroll Costs		22.6	\$2,496,449	22.6	\$2,544,882
Purchased Services					
Building and Grounds Maintenance		-	100	-	100
Design and Engineering Services		-	55	-	55
Information Technology		-	4,038	-	4,038
Other Contract Services		-	300	-	300
Subtotal		-	\$4,493	-	\$4,493
Total Personnel		22.6	\$2,500,942	22.6	\$2,549,375
Distribution By Source Of Funds					
General Revenue		22.6	2,500,942	22.6	2,549,375
Total All Funds		22.6	\$2,500,942	22.6	\$2,549,375